



“ ”

Easy to install alternatives for ceramics

Louis Van Roy

Sales Manager IP

DecorTech Conference
28 September 2022

01

UNILIN
TECHNOLOGIES

02

ALTERNATIVES

03

...AND MORE

01

UNILIN
TECHNOLOGIES

02

ALTERNATIVES

03

...AND MORE

Mohawk Industries

THE WORLD LARGEST FLOORING COMPANY



170+ countries sales



\$10B annual turnover



42 000 employees



Market leadership

Ceramic Tile, Stones & Countertops

Laminate, Vinyl Tile, Sheet Vinyl & Wood

Soft surfaces: Carpet & Rugs

Unilin

PART OF MOHAWK INDUSTRIES SINCE 2005

 **UNILIN** TECHNOLOGIES
FOR SMART LIVING



105 locations worldwide



€2.7B annual turnover



8 200 employees



5 business units

Flooring, Panels, Insulation, Godfrey Hirst & Technologies

Unilin Technologies

UNILIN'S INTELLECTUAL PROPERTY UNIT



+3000 patents



+350 licensees and partners



R&D, patent & legal experts



+20 years expertise



Different markets

Flooring (Vinyl, Laminate, Wood, Textile, Ceramics), Construction, Furniture

A decade of experience

WHY UNILIN TECHNOLOGIES?



Over 20 years of Flooring R&D



Different manufacturing technologies



For decorative application



Large team of experts



Extensive testing

Installation technologies, core materials,
digital printing,...

Extensive partnership network

TO CREATE BETTER SPACES TOGETHER



ZEETREE



And many more...

01

UNILIN
TECHNOLOGIES

02

ALTERNATIVES

03

...AND MORE

Ceramics

A WINNER IN FLOORING SINCE ANCIENT TIMES



- The most popular flooring product since ages
- Well known material and production process
- Extensive R&D has led to a great product
- Many well-known characteristics
 - Design freedom (via digital printing)
 - Fully waterproof
 - Impact resistant
 - Durable

Ceramics

NEW INNOVATIONS - ANTISLIP & DIGITAL TEXTURING



Integrated antislip technology

- Ensures safer surfaces – less damage claims
- Soft touch and natural look
- Easy to clean and durable



Aligned digital texture & design

- Print-in-Register
- 3D digital structuring
- Upgrade look and feel
- Enormous design flexibility

Opportunities in SPC

THE CERAMIC ALTERNATIVE WITH MANY ADVANTAGES



The energy efficient solution

Production

+

Installation

Opportunities in SPC

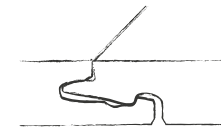
THE CERAMIC ALTERNATIVE WITH MANY ADVANTAGES



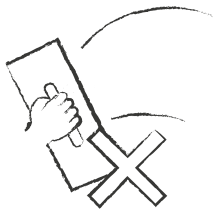
Lightweight products



High impact resistance



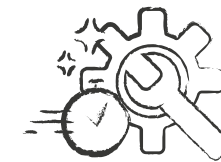
Click installation



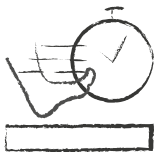
No grout



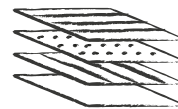
No dust



Faster installation



Short drying time



Endless design possibilities



Energy-efficient solution

Click installation

FAST, CLEAN, SIMPLE!



Ceramic tile installation

1. Break out of old floor
2. Levelling of underfloor
3. Installation by professionals (cement)
4. Drying
5. Grouting
6. Drying

→ **Long process, for professionals**



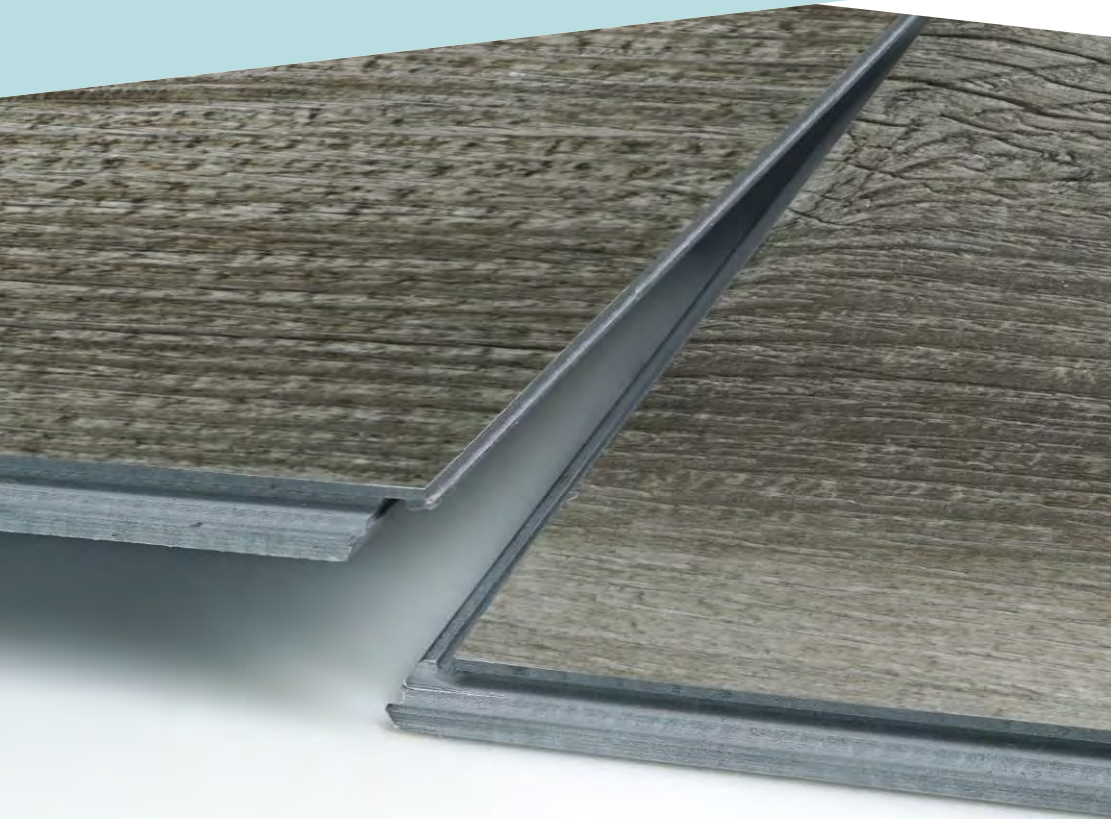
SPC installation

1. Floating installation (on top of existing floor)
2. Levelling underfloor
3. Installation with click

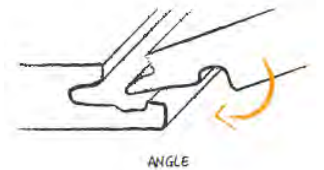
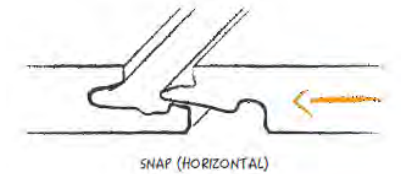
→ **Short process, even for DIY**

Locking systems

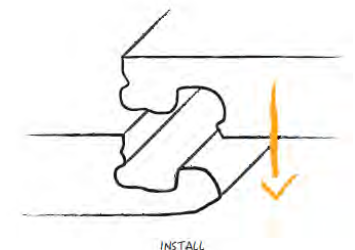
WITH HIGH PERFORMANCE AND PRETENTION



- Most widely used click
- Well known in SPC industry
- Unrivalled locking performance
- Easy to install and produce



- Fast & easy installation
- Great installation flexibility
- Perfect for DIY market



Digital printing & texturing

GAME CHANGER FOR DESIGN POSSIBILITIES

Digital printing as the future for SPC design

- Direct to board printing
- Digital texturing
- Easy to install and produce

Benefits

- Unlimited design freedom
- No repeats
- Sharpness & high contrast
- Great details and nuances
- Make to order
- New print formats



Digital printing process

ALL ELEMENTS MUST WORK PERFECTLY TOGETHER



Direct to board production process

SINGLE PASS PRODUCTION LINE

1. **Make ready** for printing:

1. Brushing & cleaning
2. Adhesion promotor: UV coating
3. White UV coating

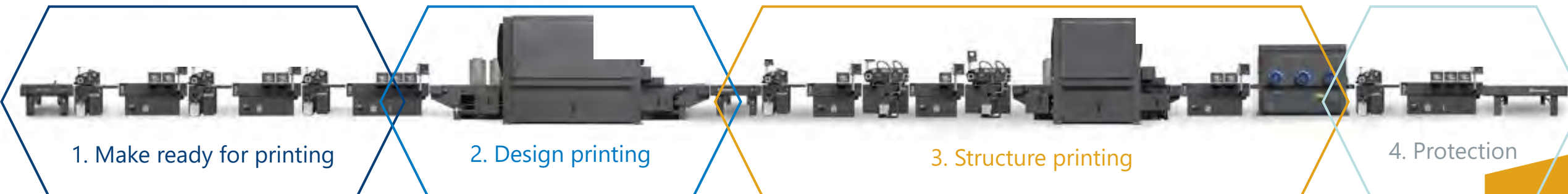
2. **Design printing:**

1. Design is printed digitally with UV inks (4-10 colours)
2. Protective / matt UV coating

3. **Structure printing:**

1. Wear layer is coated
2. Structure is digitally embossed (repellent or masking)
3. Drying and / or removing

4. **Protection:** protective UV coating

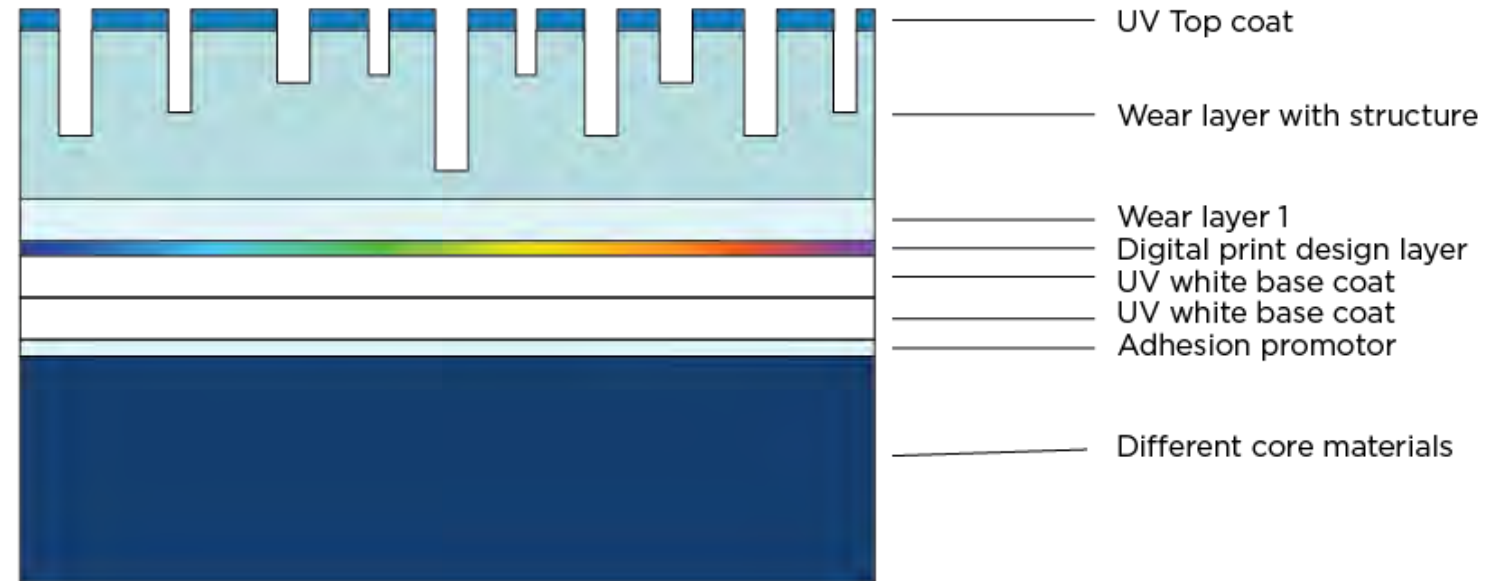


Typical build up

DIFFERENT LAYERS

Build up varies based on

- Core material
- Design (dark – light or mid tone)
- Texturing depth
- Wear resistance
- Scratch resistance
- Other quality requirements



Groutable SPC

COMBINING THE BEST OF BOTH WORLDS



People like the **ease of installation** of an SPC floor combined with the great **characteristics** of a **ceramic floor**

- Extensive R&D by Unilin Technologies in different fields
 - Easy installation
 - Light weight
 - High impact resistance
 - 100% waterproof
 - Grout imitations

Groutable solutions

GROUT IMITATION TECHNOLOGY



Look of ceramics grouting

- Perfect grout look alike
- No grouting needed after installation
- No visible joint between panels

Groutable solutions

CLICK GROUT TECHNOLOGY

Compared to ceramics

- Light weight + higher impact resistance
- Click system
 - Fast installation
 - Perfect alignment
- Walkable in less than 1 day

Compared to other SPC products

- 100% waterproof surface

See this floor on our
booth D1 026



FLINTILE 
PATENTED TECHNOLOGY

All-in-one solution

SPC DIGITALLY PRINTED AND GROUTED CLIC FLOOR



The investment with a great ROI



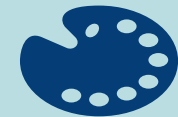
Fast & Easy
installation



Fully waterproof
material



More sustainable
solution



MTO & customization &
huge design flexibility

01

UNILIN
TECHNOLOGIES

02

ALTERNATIVES

03

...AND MORE

Many more technologies and innovations

INSTALLATION PATTERNS

Hassle-free herringbone installations



UNIZIP®
PATENTED TECHNOLOGY

Aligned square tile installations with click

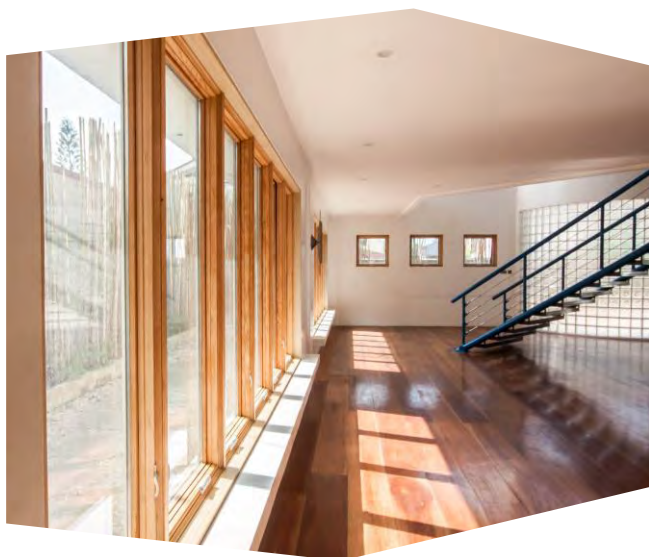


**SQUARE
CLIC**
PATENTED TECHNOLOGY 

Many more technologies and innovations

CORE MATERIALS

**Extremely stable
core technology**



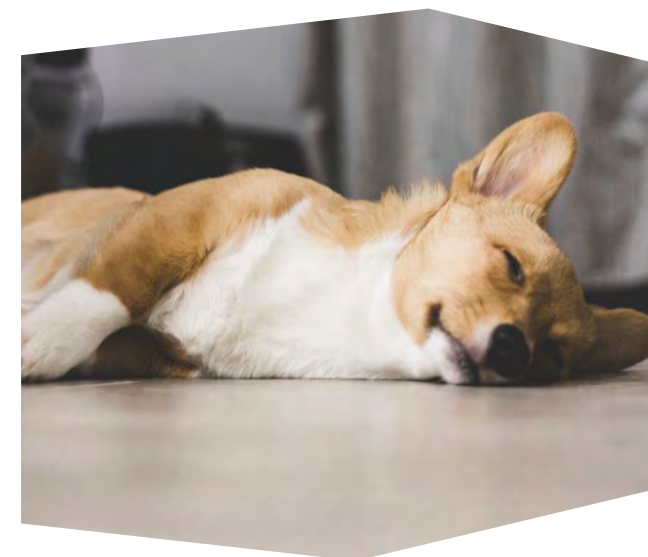
XPC 
PATENTED TECHNOLOGY

**Circular PVC free
core technology**



P-SPC 
PATENTED TECHNOLOGY

**Core technology
with improved ergonomics**



**COMFORT
CORE** 
PATENTED TECHNOLOGY

Visit our booth

Hall D1

Booth 026



Louis Van Roy

M +32 476 23 15 90

louis.vanroy@unilin.com



Thank you!

Visit our website
unilintechnologies.com

